



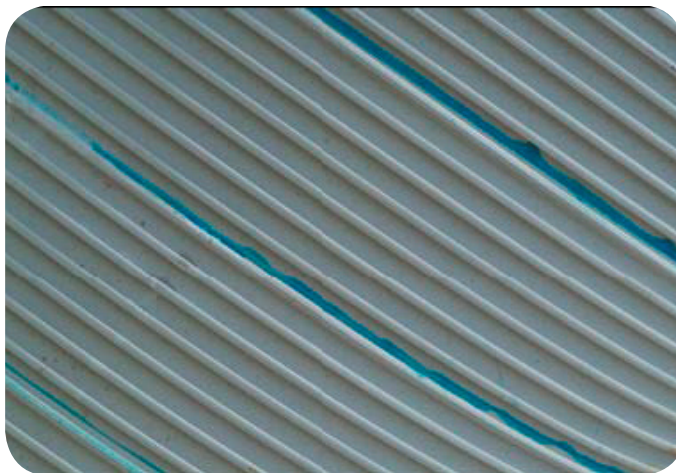
Pipes that Work



Features and Benefits



Plastube is the lightweight, strong column formwork that is made-to-measure for your applications.



Product Features

- Lightweight, ease of handling
- Ease of stripping after column is formed
- Safety; no razor sharp edges exposed when stripping
- Robust construction; Durable against wet weather, knocks, onsite conditions etc
- Exact sizes for your required diameter and length.
- No wastage with incremental sizing
- Architectural grade smooth finish columns available. Request a lined column when ordering
- Ready to go on site next day
- Full technical support
- Competitively priced

Two Finishes available

Structural: which will show a spiral line on the finished column.

Architectural: column forms lined with a rigid plastic sheet, providing a smooth finish to the concrete column

Lightweight, ease of handling

The product is so light and easy to use that it is preferred by the people who handle it. Crane and excessive labour are seldom required to place Plastube.

Ease of stripping after column is formed

The inherent waxiness on Plastube ensures no form of oil application is required. Plastube is very easy to strip, as simple as using a knife or saw. It is the quickest disposable formwork to strip, either by cutting off in slabs or by unwinding from the column. There are no razor sharp edges when cut, making it easy to dispose of, with no dangerous scrap left on site.

Robust construction

Plastube stands up to onsite conditions. It will resist knocking and denting from falling objects, is not affected by rain and can be manhandled about the site very easily.

Made to measure

Plastube can be ordered in exact sizes for your required diameter and length, thus no wastage or incremental sizing.

Plastube is produced in exact sizes eliminating the wastage derived from using stock lengths. Plastube is also produced in any diameter between 250mm to 2000mm, thus eliminating the time honoured system of 'going up one size' to accommodate a designer's request.

Ready to go on site next day

Exact lengths allow for a very short lead time, no cutting is required on site and Plastube is produced quickly to your specific requirements. Next day delivery to most metropolitan areas is available depending on order size.

Full technical support

Call our Customer Service Team for technical information - we are here to help.

Reduces the 'Critical Path' timeline

Due to the ease of stripping, Plastube can be left on until the last moment. The use of Plastube formwork reduces floor cycle time and cuts down the 'Critical Path' timeline on the project chart.

Plastube allows pouring of floor slabs and support columns to the slab at the same time.



Why should an architect or engineer specify Plastube circular column formwork?

Incremental sizing

Plastube column forms are the only economical forms that can be made in any diameter. This allows an engineer to design a column to exact millimetre sizing, thus avoiding the need to go up to a standard size and waste concrete.

May be stripped of left on (inside out)

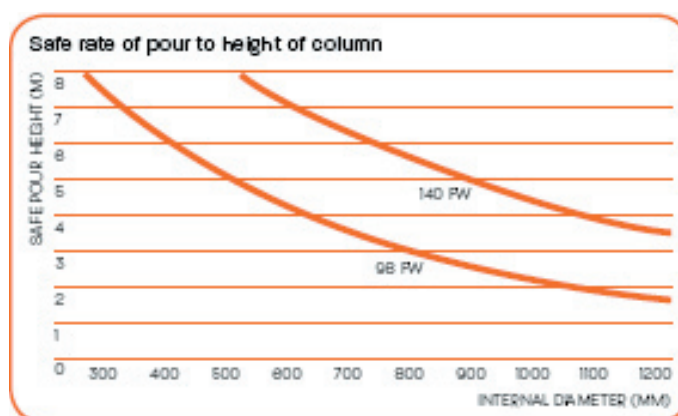
Plastube column forms can be stripped, or alternatively wound inside and out and left in place. This inside out aspect allows an architect to design plastic coated columns in places such as highly corrosive atmospheres (chemical plant, large water tanks), or undercover car parks. This means the column is protected from corrosive and impact damage. Cars suffer less damage when striking a plastic column.

Lower installed cost of column / quicker project completion time - critical path

As Plastube column formwork can be placed and stripped quicker than any other formwork and, since a column can be poured the same time as a floor, projects have quicker completion times. Due to reduced labour costs, columns from Plastube have a lower installed cost. Overall building costs are thereby reduced (formwork being approximately 10% of overall building costs and up to 40% in car parks).

Ordering

Plastube column forms are ordered by specifying the diameter and length required. Two thicknesses of profile are available depending on the height of the concrete pour - as per the chart.

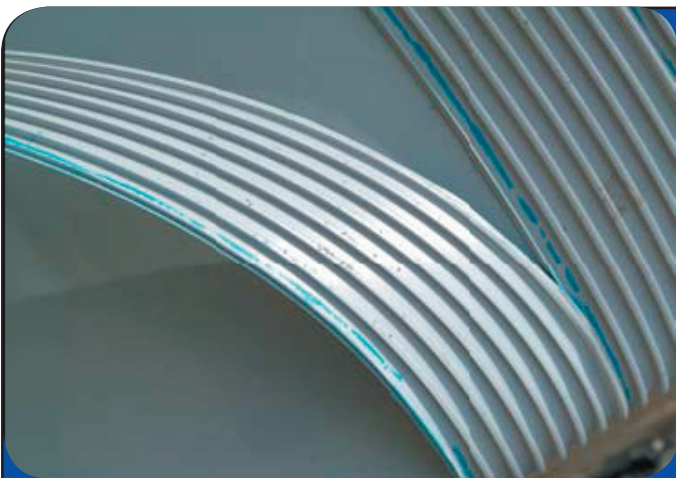


NOTE: THE RATE OF POUR AFFECTS THE LOAD ON THE FORMWORK. THIS CHART IS FOR THE SAFE HEIGHT OF COLUMN THAT CAN BE POURED IN AN HOUR (IN EXTREME CONDITIONS THIS TIME MAY VARY). PLEASE CONTACT CUSTOMER SERVICE FOR ADDITIONAL INFORMATION.





Plastube is the only economical column form that can be made in any diameter, minimising waste.





Plastube Plastic Products

Queensland - Terry Poole
0410 220 349

Victoria - Dave Schembri
0410 220 603

NSW - Contact Terry or Dave

www.plastube.com.au